

**At RIT, you're  
always on to**

**something...**

# Our community



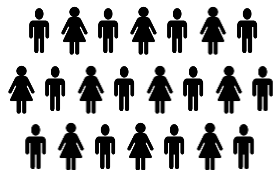
Students from  
all 50 states



13:1 student-  
to-faculty ratio



and 90 countries



Average class size  
22 students

- **16,800+** total students (main campus)
- One of the largest private universities in the country, with a small school feel
- **14,055** undergraduates
- **3,649** AALANA students (21%)
- **1,925** international students (11%)
- **970** deaf and hard-of-hearing students (6%)

## Bend the way you think about our academics

- **Nine colleges**
- **More than 90 degree programs**
- **100+ minors**

Art and Design	Game Design and Development
Business and Management	Health Professions and Medical Sciences
Communications and Digital Media	Humanities and Social Sciences
Computing and Information Sciences	Math and Science
Engineering and Engineering Technology	Photography, Film, and Animation
Environmental Studies and Sustainability	Undeclared and Individualized Study

**Excellence in co-op,  
research, and more**

# Proud to host one of the world's largest and oldest cooperative education programs

**100%**

Of our programs offer experiential learning programs, such as co-ops, internships, research, or clinical rotations

**3,600**

Students complete more than 7,700 co-ops each year

**2,300+**

Employment partners host RIT co-op students each year

**94%**

Of employers said they would hire their co-op for a full-time position

**\$65m**

Co-op students annually generate \$65 million in earnings

- Co-op is significant **paid, full-time** work that directly relates to your major
- Tuition-free
- 91% of programs have a required or optional co-op component
- Co-op hiring partners are in all **50** states and **30** countries abroad

## Sample co-op schedules

**Co-op requirements vary by major. Departments typically require anywhere from 3-12 months of co-op experience.**

**60%** of students receive a full-time job offer from a co-op employer.

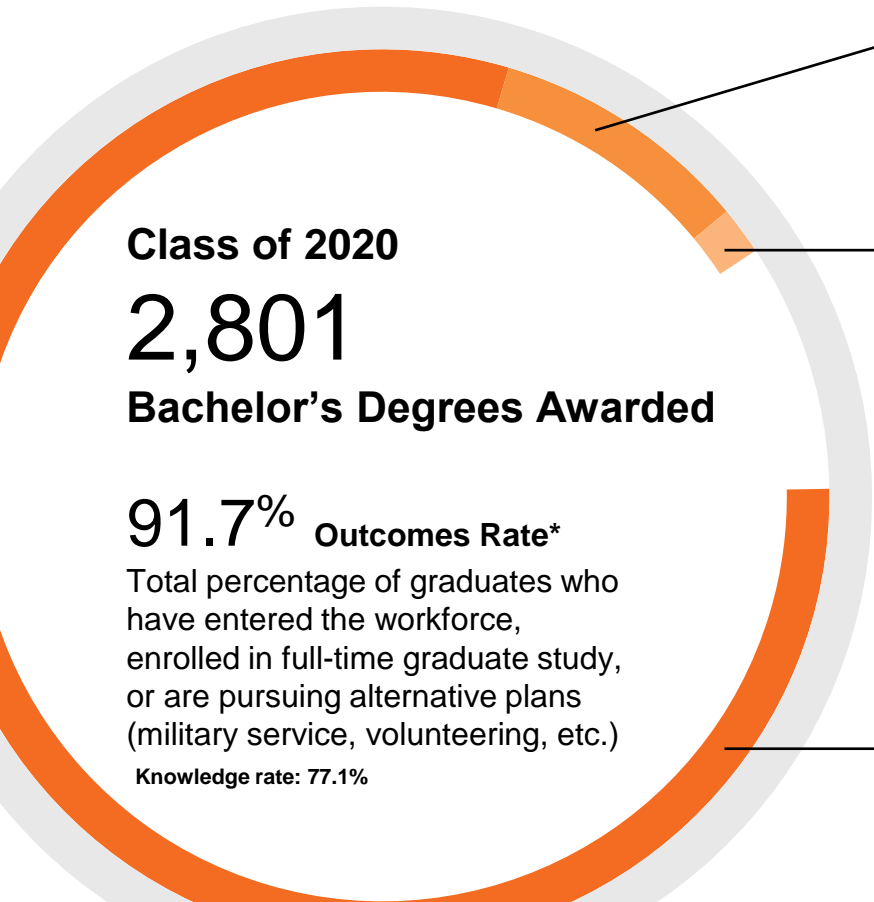
### Engineering Example

Year	Fall	Spring	Summer
One	RIT	RIT	--
Two	RIT	RIT	--
Three	Co-op	RIT	Co-op
Four	RIT	Co-op	Co-op
Five	RIT	RIT	--

### Business Example\*

Year	Fall	Spring	Summer
One	RIT	RIT	--
Two	RIT	RIT	Co-op
Three	RIT	RIT	--
Four	RIT	RIT	

\*Many business students choose to do more than 1 co-op. Accounting students co-op spring term of their third year.



**8.7%**  
**Full-Time Graduate Study**

**1.6%**  
**Alternative Plans**

**81.4%**  
**Employed**

# Experience makes all the difference



Learn more at: [rit.edu/careerinfo](http://rit.edu/careerinfo)

# Combined Accelerated Bachelor's/Master's Degrees

## Dual-Degree Programs

- Mostly in STEM, but also Criminal Justice, Public Policy
- [rit.edu/study/combined-accelerated-bachelors-masters](http://rit.edu/study/combined-accelerated-bachelors-masters)

## Combined Bachelor's/Master's Degrees

- 4+1 MBA
- 4+2 BFA Design/Master of Architecture

## Partner Programs

- Lake Erie College of Osteopathic Medicine (LECOM)
- SUNY Upstate Medical University 4+4 BS/MD
- Syracuse University College of Law 3+3 BS/JD

## As little as 5 years

Most programs completed in 5 years (including co-op) and save 1 year of time

## 50+ combinations

BS/MS, BS/ME, 4+1 MBA, and more

## 40% scholarship

40% scholarship is granted for graduate education (does not apply to partner programs)



# Undergraduate research... hands-on, and driven by you.

- Engage in research as early as your first-year
- Annual Undergraduate Research Symposium features hundreds of student participants
- **7 Research Experience for Undergraduates (REU)** pathways supported through the National Science Foundation
- **30 Goldwater Scholars** awarded since 2005 - one of the preeminent scholarships for undergraduate students in the fields of the natural sciences, engineering and mathematics



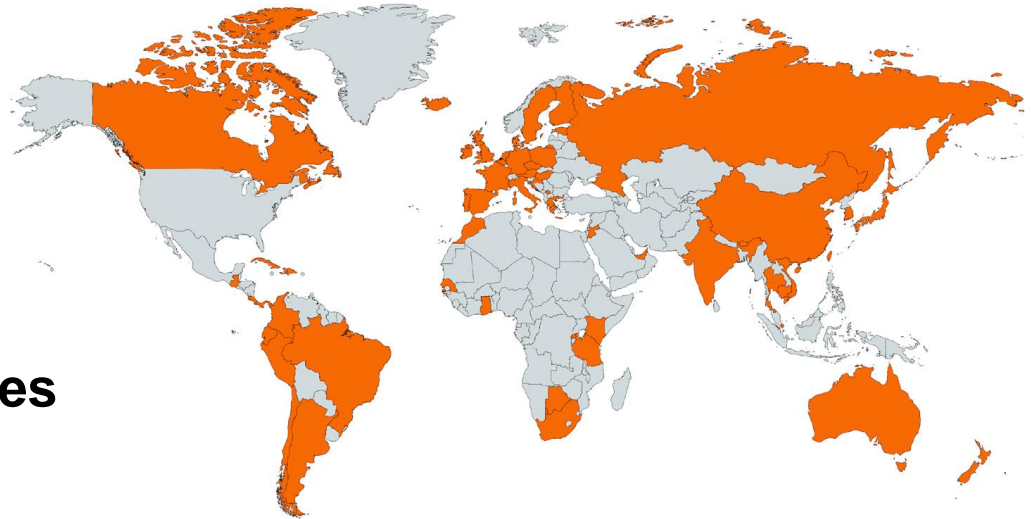
# Study abroad and global opportunities

## ■ International locations

- China: Beijing & Weihai
- Croatia: Dubrovnik & Zagreb
- Kosovo: Pristina
- United Arab Emirates: Dubai

## ■ Study abroad in 55 countries

- Service abroad
- Work abroad



■ = Study abroad available

# An ecosystem for innovation and entrepreneurship

We provide the guidance, resources, programs, and activities that develop innovative and creative thinking.

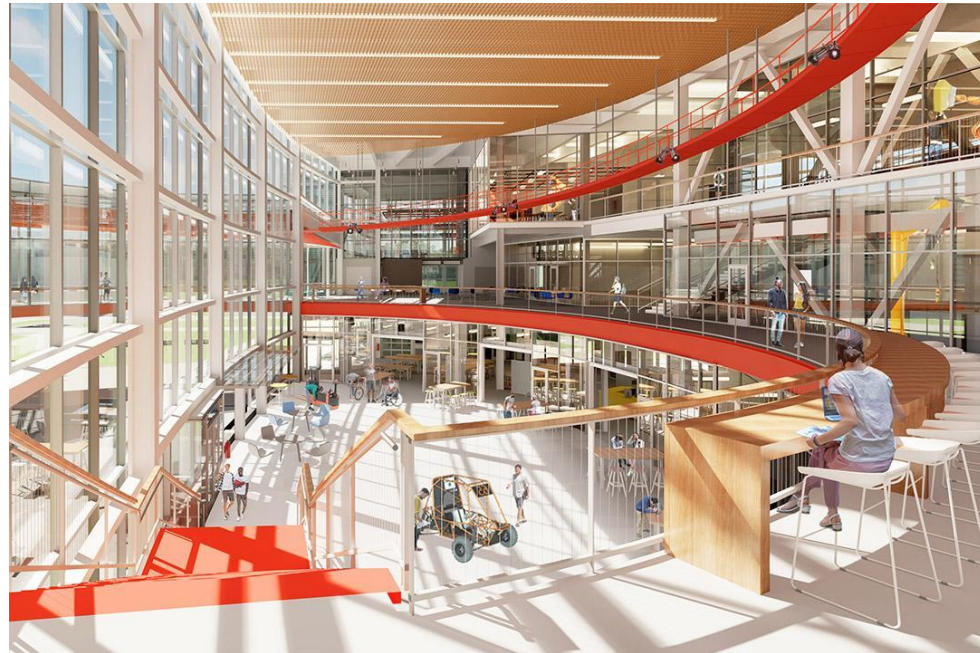
- Imagine RIT
- MAGIC Center
- Student Incubator and Accelerator
- Tiger Tank Competition
- Construct/Makerspace: functional prototyping and collaborative space



# The SHED

## Student Hall for Exploration and Development

- **100,000+** square feet
- Huge maker space
- Black box theater
- Dance studio
- Musical rehearsal spaces
- Opening **Fall 2023**
- **\$50M** donation from alumnus and Datto founder **Austin McChord '09**



Highlights the makers, doers, and thinkers of RIT. The collaboration of all students at the intersection of technology, art, and design.

# Global Cybersecurity Institute

- Opened **Fall 2020**
- Designed for advanced cybersecurity education, training & research
- World-class facilities, **52,000 sq. ft.**
- Fully-equipped Cyber Range
- Assisting government and industry test their security



# Building the future

At RIT, we are reimagining our future. We are transforming RIT by building places and spaces for creators and makers.



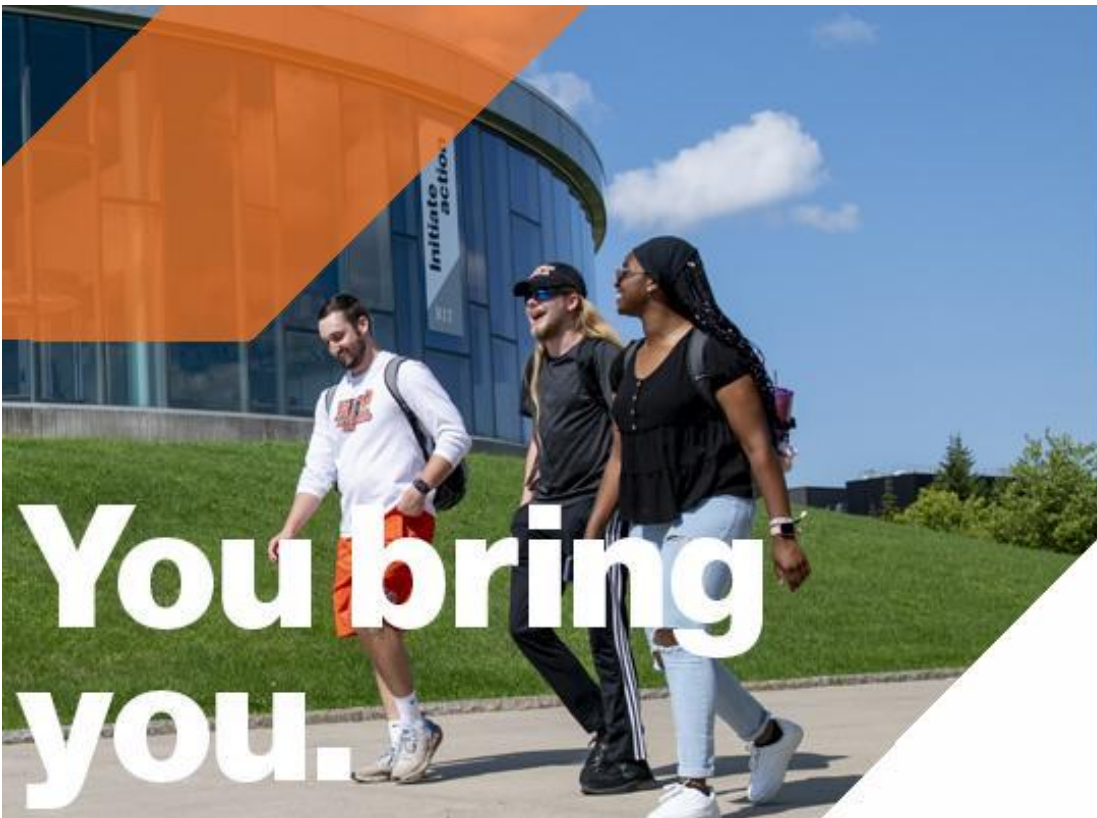
**Music Performance Theater**  
Expected Completion January 2024



**Athletics Tiger Stadium**  
Expected Completion TBD



**RIT Dubai New Campus**  
Phase 1: Completed Spring 2021



## We welcome all. We celebrate all.

### Spaces to Thrive

Center for Spirituality & Religious Life, Q Center, MOSAIC, Women and Gender Suite, and so much more.

### NTID

Learn ASL and about deaf culture at weekly No Voice Zone events.

### Division of Diversity and Inclusion

From one-on-one coaching and community building to leadership development, the Division of Diversity and Inclusion will support you from move-in to graduation.

### Women

Hot Wheelz, RIT's all-female racing team, creates community, challenges the competition, and builds winning race cars.

# Choose the best entry path for you

## Apply directly to a major

Start course work in your desired major right away.

## Apply to a college-based Exploration Option

Art Exploration  
Business Exploration  
Computing Exploration  
Design Exploration  
Engineering Exploration  
Engineering Technology Exploration  
Liberal Arts Exploration  
Photographic Arts and Sciences Exploration  
Science Exploration

## Apply to Individualized Study

A customized academic program designed by you.



# Admission process

## Differential admission.

- On your application, you select a first-choice major/entry program, and if applicable, a second or third choice as well.
- Competitiveness can vary by major.
- SAT/ACT optional for all programs

## 91-97

Middle 50%  
High School GPA  
Accepted Applicants

## 1270-1450

Middle 50%  
SAT  
Accepted Applicants

## 29-34

Middle 50%  
ACT  
Accepted Applicants



## Open House (Sept. – Nov.)

Academic Sessions (virtual and on-campus)

Beyond Academic Sessions (virtual)

**Get all the details at  
[rit.edu/experience](https://rit.edu/experience).**



## We're safely welcoming you to campus.

We invite you to campus 6 days a week for a small group tour experience.

## Virtual Campus and Housing Tours

Led by live student tour guides who can't wait to get to know you.

## Video Conversation

We're here to help with your individual questions.

## Contact Us

**Mark Emblidge**

**IEC Liaison**

**[maeadm@rit.edu](mailto:maeadm@rit.edu)**

**At RIT, you're  
always on to**

**something...**

**Extraordinary**

**Inspiring**

**Creative**

**Remarkable**

**Unprecedented**

**Imaginative**

**Visionary**

**Inventive**

**Inclusive**

**Life-Changing**

**Sophisticated**



**Meaningful**